

THEMIS WEB FOR MARITIME MONITORING



CLS
COLLECTE LOCALISATION SATELLITES

THEMIS* WEB, YOUR ONLINE MARITIME MONITORING SYSTEM

THEMIS WEB is a comprehensive data integration service and a crucial tool for maintaining 24-hour maritime surveillance via a secure, web-based interface.

BENEFITS

- No IT investment
- Fully secure web access
- Secure archiving
- Back-up facilities
- Technical support/maintenance provided by our experts
- All maritime surveillance functions without the investment

ONLINE MARITIME MONITORING

The THEMIS* WEB maritime monitoring is a reliable tool that displays position reports from all satellite providers and includes advanced geo-fencing capabilities, alert monitoring and a variety of vessel management features.

THEMIS WEB is hosted by CLS, and monitored by our team of operators, who work around the clock 365 days/year. Capacity building, training and technical support/maintenance are provided.

THREE LEVELS OF THEMIS WEB SERVICE

CLASSIC










- Ideal for small fleet managers with 50 vessels maximum.
- One month of data available on-line.

SILVER

- Ideal for administrations or fleet managers with less than 200 vessels.
- Six months of data available on-line.

GOLD

- Ideal for administrations.
- No limit on number of vessels.
- Two years of data available on-line.

	CLASSIC	SILVER	GOLD
 Internet Access	✓	✓	✓
 Positioning	✓	✓	✓
 Mapping with C-MAP	✓	✓	✓
 Zone Management	×	✓	✓
 Reports	×	✓	✓
 Google Mapping Tool	×	×	✓
 Alerts	×	×	✓
 No limit on vessels	×	×	✓
 Two-year data archive	×	×	✓

*THEMIS = THEmatic Maritime Information System

THEMIS WEB MARITIME MONITORING TOOL

The Maritime Surveillance application is a crucial tool for maintaining 24-hour vessel surveillance and managing multiple restricted zones via a user-friendly interface.

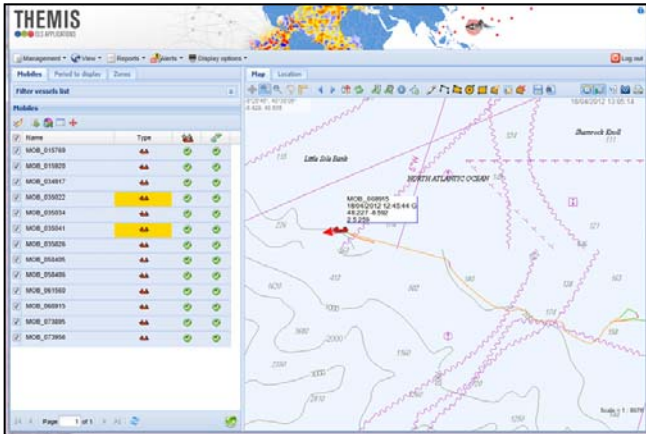
MARITIME MONITORING

THEMIS is capable of processing and displaying vessel tracking data (date, GPS position, speed, heading...) for an entire national fleet as well as the vessels in a given zone regardless of the satellite provider (Inmarsat, Iridium, Argos, AIS, etc.). Advanced geo-fencing capabilities make it possible to control all vessels in and outside a maritime domain. Alert features include:

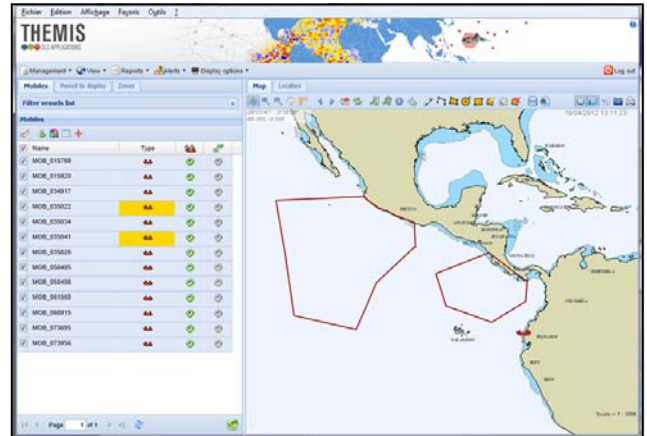
- Zone management
- Detection of prohibited actions (ex: trans-shipment)
- Administration interface
- Easy to import additional data
- Auditing of outlaw behaviors (speed, crossing restricted areas, etc.)

BENEFITS

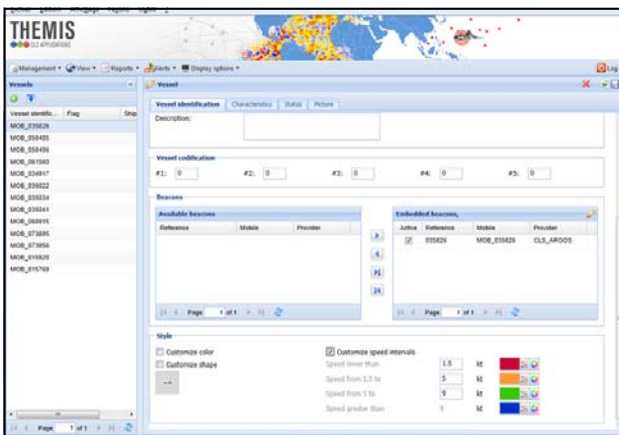
- Friendly, intuitive GUI to visualize active fleet on screen
- Geo-fencing capabilities: to control multiple restricted zones
- Detection of prohibited actions



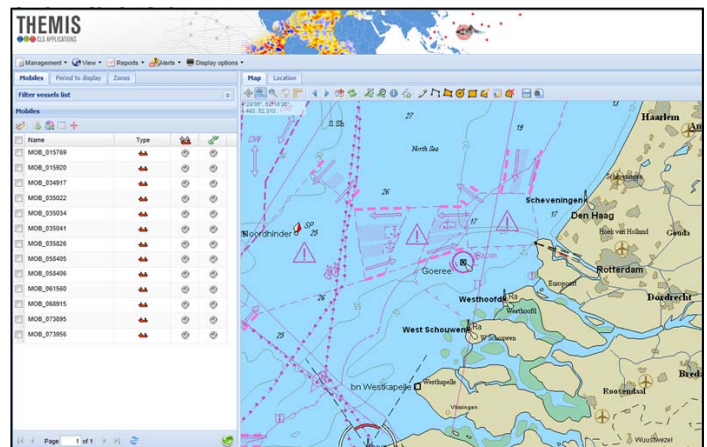
Friendly, intuitive graphic user interface (GUI) for visualizing active fleet on screen.



Manage multiple restricted zones and EEZ.



Manage registration of your fleet via the vessel management interface.



Fine-scale display on C-MAP® nautical chart.

WHY CHOOSE OUR MARITIME MONITORING SYSTEM

ABOUT THEMIS

The THEMIS system is a scalable, turnkey maritime monitoring solution. Powered by an Oracle® database, THEMIS includes the software, hardware, installation and training necessary for operating a state-of-the-art maritime monitoring centre on a regional level.

THEMIS WEB displays data from a number of sources including AIS, Iridium, Inmarsat, Argos, GPRS, AIS... The different data are displayed via a user-friendly online interface that operates with sophisticated electronic nautical charts (C-MAP®). THEMIS WEB is capable of a number of export and import functions, supports multi-users and manages different user profiles, and can easily be used for administrative management as well as tracking and monitoring around the clock.

All THEMIS licenses include our world-renowned customer support, maintenance, updates to adapt to new legislation and 24/7.

WHY CHOOSE CLS

CLS, subsidiary of the French Space Agency (CNES) and the French Oceanography Institute (IFREMER) has worked closely with ship owners, navies, coast guards and maritime agencies for over 20 years, providing vessel tracking services and SSAS systems.

CLS has worked hand-in-hand with ship owners to develop an SSAS solution and is currently an LRIT provider in more than 30 countries. CLS provides LRIT data centres to both EMSA and the U.S. Coast Guard and tracks over 40,000 vessels worldwide every day.

Beyond its reputation for reliable, secure maritime software and equipment, CLS is known for:

- Personalized, world-renowned customer service
- Highly-qualified technical support
- A long-standing partnership with the main fisheries administrations
- 24/7 operational centre
- A network of worldwide offices and subsidiaries to serve you in your language and time zone.

HIGHLIGHTS

- Multi-source data input capabilities
- User-friendly viewer with C-Map charts
- Data exchange with other monitoring centres
- Fully scalable, turnkey maritime surveillance suite
- Used in over 20 countries
- Full secure web-access

STRENGTHS

- Over 20 years experience
- Highly-qualified technical support
- Robust, reliable solutions
- 15 offices and subsidiaries worldwide
- LRIT provider in more than 30 countries
- Over 40,000 vessels tracked worldwide



FOR MORE INFORMATION ...

PLEASE CONTACT themis-sales@cls.fr